

产品说明 Product Description:

1.外观 Appearance:

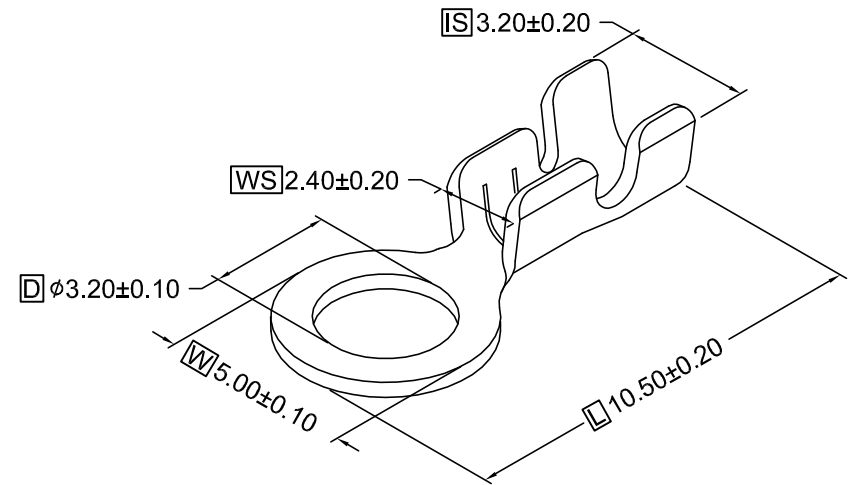
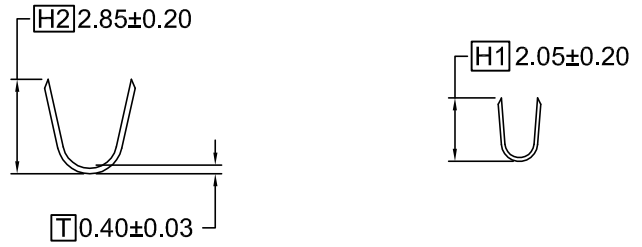
>30CM距离, <5S目视, 无腐蚀、刮伤、氧化
 No corrosion, scratches, oxidation on surface
 Inspection condition:
 Inspect from >30cm away and for <5 seconds

2.环保: 符合ROHS&REACH

RoHS&REACH compliance: Yes

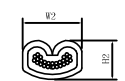
REV. (版本)	DESCRIPTION (修改内容)	DATE. (日期)

**所下载之产品规格表
 仅供参考**
 The products of download is only for reference



铆压最小拉力标准 (UL310 See Clause 6.3.1)
 Forces for crimp pull-out test

Wire size	Force	
AWG	mm ²	N
26	(0.13)	3 (13.4)
24	(0.2)	5 (22.3)
22	(0.32)	8 (36)
20	(0.52)	13 (58)
18	(0.82)	20 (89)
16	(1.3)	30 (133)
14	(2.1)	50 (223)
12	(3.3)	70 (311)
10	(5.3)	80 (356)



未标注尺寸公差参考 Unmarked dimensional tolerance reference	
0±0.2	0°±5°
0.0±0.2	0.0°±3°
0.00±0.1	0.00°±1°
0.000±0.05	

导线规格 Conductor	20~24AWG	
电线绝缘OD Insulation	-	
核准 APPROVED	审核 CHECKED	制图 DRAWING
日期 DATE	版本 REV.	

产品料号 Part NO.	R320215	文件名称 File Name	规格图 Product Specification
产品规格 Note	-	文件编号 File NO.	-
客户料号 Customer's Part NO.	-	单重 Single Weight	-
材质 Material	-	包装数量 Packing Q' TY	25000Pcs/Reel
适配端子 Mating Part/ Spec.	-	认证编号 Certification NO.	E207485

电线压接标准 Wire Crimping Standard	导体压接 Conductor crimp (mm)		绝缘压接 Insulation crimp (mm)	
	W1	H1	W2	H2
20AWG(21*0.180 OD:1.85mm)	2.00±0.10	1.20±0.05	2.80±0.10	2.40±0.10
22AWG(17*0.156 OD:1.55mm)	2.00±0.10	1.10±0.05	2.60±0.10	2.15±0.05
24AWG(11*0.156 OD:1.40mm)	2.00±0.10	1.02±0.05	2.60±0.10	2.05±0.05

