

产品说明 Product Description:

1.外观 Appearance:

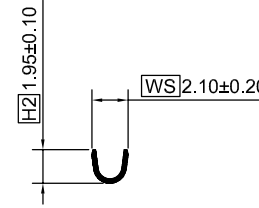
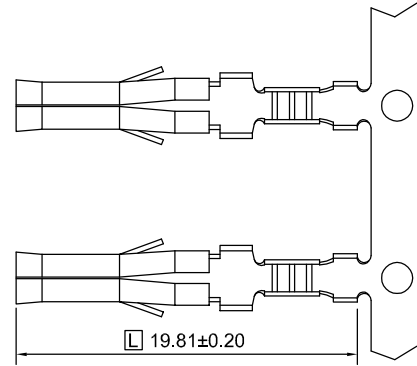
>30CM距离, <5S目视, 无腐蚀、刮伤、氧化
No corrosion, scratches, oxidation on surface
Inspection condition:

Inspect from >30cm away and for <5 seconds

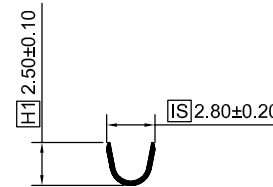
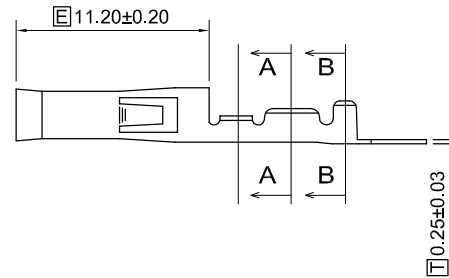
2.环保: 符合ROHS&REACH

RoHS&REACH compliance: Yes

REV. (版本)	DESCRIPTION (修改内容)	DATE. (日期)



SECTION A-A



SECTION B-B

所下载之产品规格表
仅供参考用

The products of download is only for reference

未标注尺寸公差参考 Unmarked dimensional tolerance reference	
0±0.2	0°±5°
0.0±0.2	0.0°±3°
0.00±0.1	0.00°±1°
0.000±0.05	

电线导体规格
Conductor

20~24AWG

电线绝缘OD
Insulation

-

核准
APPROVED

审核
CHECKED

制图
DRAWING

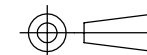
尺寸单位
Units

mm

日期 DATE

版本 REV.

产品料号 Part NO.	C233011	文件名称 File Name	规格图 Product Specification
产品规格 Note	-	文件编号 File NO.	-
客户料号 Customer's Part NO.	-	单重 Single Weight	-
材质 Material	-	包装数量 Packing Q' TY	7000Pcs/Reel
适配端子 Mating Part/ Spec.	φ2.33mm	认证编号 Certification NO.	-



JH TERMINAL